

Injection Valve EV 14



- ▶ Flow rate at 3 bar: up to 1,000 g/min (n-heptane)
- ▶ Max. 8 bar
- ▶ Conical spray or 2-spray
- ▶ With or without extension
- ▶ Spray angle 15 to 85°

EV 14 injection valves are the latest revision of the EV 6 injection valve technology. EV 14 xT are the latest revision of the EV 12.

EV 14 is designed for a wide range of flow rates and spray patterns. Compact size and three standard versions simplify mounting in a variety of applications.

Technical Specifications

Mechanical Data

| | |
|---|---|
| System pressure | Max. 5 bar (8 bar for motorsport use) |
| Weight | ≤ 30 g |
| Installation lengths | 33.6, 48.65 or 60.65 mm |
| Fuel input | Top-feed injector |
| Operating temperature | -40 to 110°C |
| Permissible fuel temperatures | ≤ 70°C |
| Climate-proof corresponding to saline fog test DIN 50 021 | |
| Housing design | Compact (K), Standard (S), Long (L) |
| Spray type | C (Conical Spray) or E (2-Spray) |
| Flow rate at 3 bar (n-heptane) | 151 to 1,462 cm ³ /min 103.5 to 1,000 g/min |
| Spray angle α | 15 to 85° |
| Bent angle γ | 0 to 15° |
| Coil resistance | See variations |
| Fuel compatibility | E85 Use with different media is not permitted. |

Electrical Data

| | |
|--------------|-------------|
| Power supply | 6 to 16.5 V |
|--------------|-------------|

Connectors and Wires

| | |
|------------|---|
| Connectors | Jetronic, Sumitomo, Motorsport connectors |
|------------|---|

Installation Notes

Please ask for more information before ordering.

Ordering Information

EV 14 ES, 116 g/min n-heptane
Order number **0280.158.200**

EV 14 CL, 150 g/min n-heptane
Order number **0280.158.107**

EV 14 ES, 150 g/min n-heptane
Order number **0280.158.013**

EV 14 CKxT, 237 g/min n-heptane
Order number **0280.158.038**

EV 14 EL, 237 g/min n-heptane
Order number **0280.158.116**

EV 14 CS, 387 g/min n-heptane
Order number **B280.436.038-09**

EV 14 CS, 387 g/min n-heptane
Order number **B280.436.038-10**

EV 14 ESxT, 429 g/min n-heptane
Order number **0280.158.123**

EV 14 CS, 503 g/min n-heptane
Order number **B280.436.038-08**

EV 14 CS, 503 g/min n-heptane
Order number **B280.436.038-07**

EV 14 CKxT, 670 g/min n-heptane
Order number **0280.158.040**

EV 14 CS, 670 g/min n-heptane

Order number **B280.436.487-01**

EV 14 ES, 697 g/min n-heptane

Order number **B280.436.469-01**

Accessories

Clip for locking bush of plastic

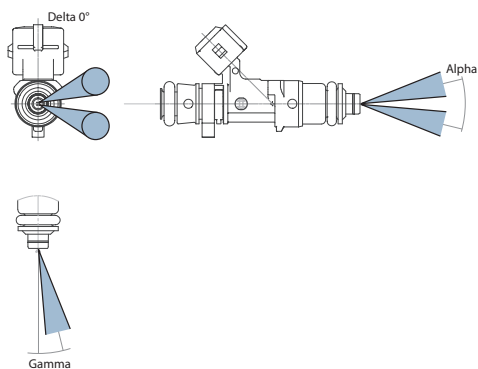
Order number **2431.314.021**

Clip for locking bush of steel

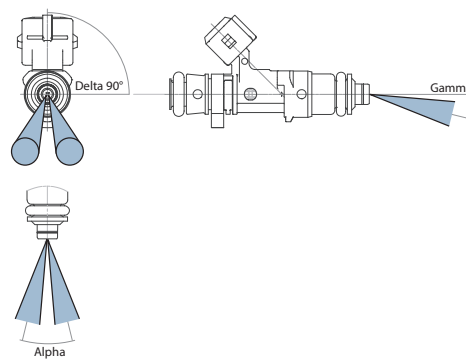
Order number **2431.314.018**

Dimensions

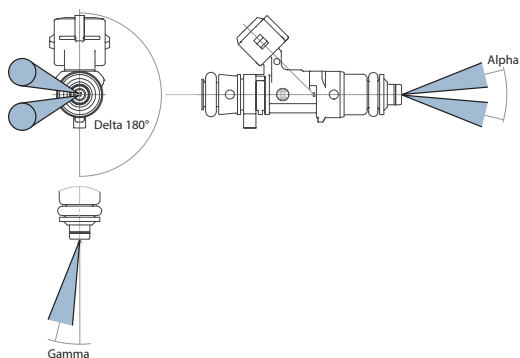
Spray bent to the „right“, Delta=0°



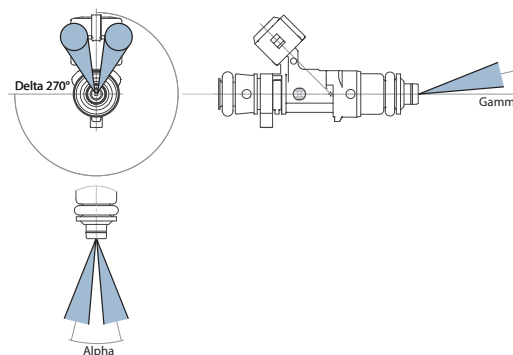
Spray bent „down“ (away from electr. connector), Delta=90°



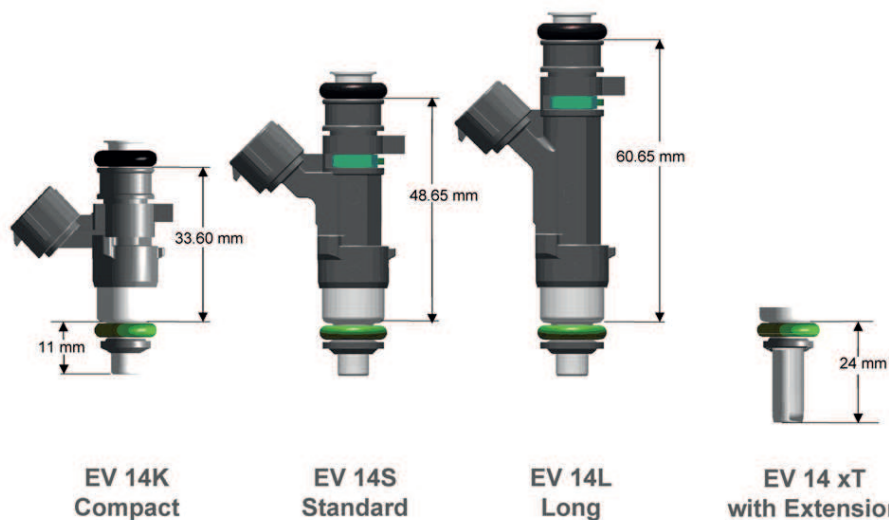
Spray bent to the „left“, Delta=180°



Spray bent „up“ (towards electr. connector), Delta=270°



Delta Angel



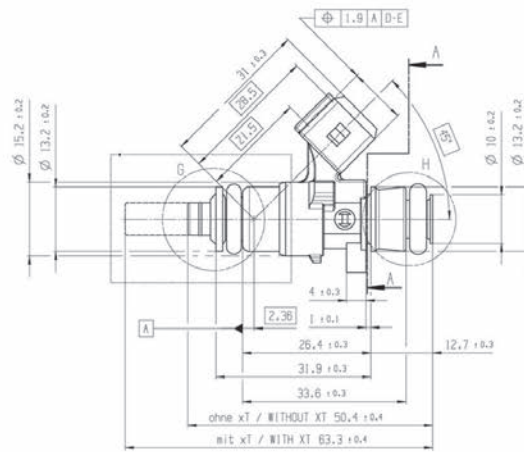
**EV 14K
Compact**

**EV 14S
Standard**

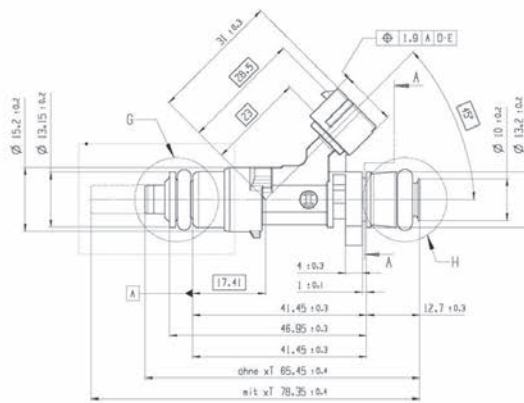
**EV 14L
Long**

**EV 14 xT
with Extension**

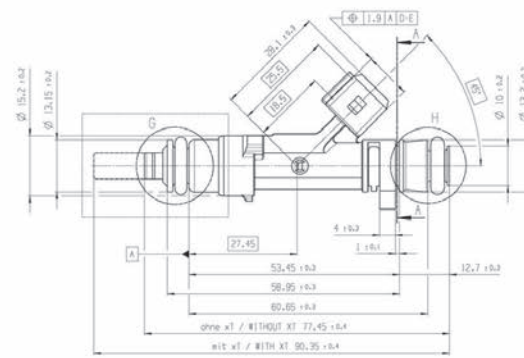
Housing Variations



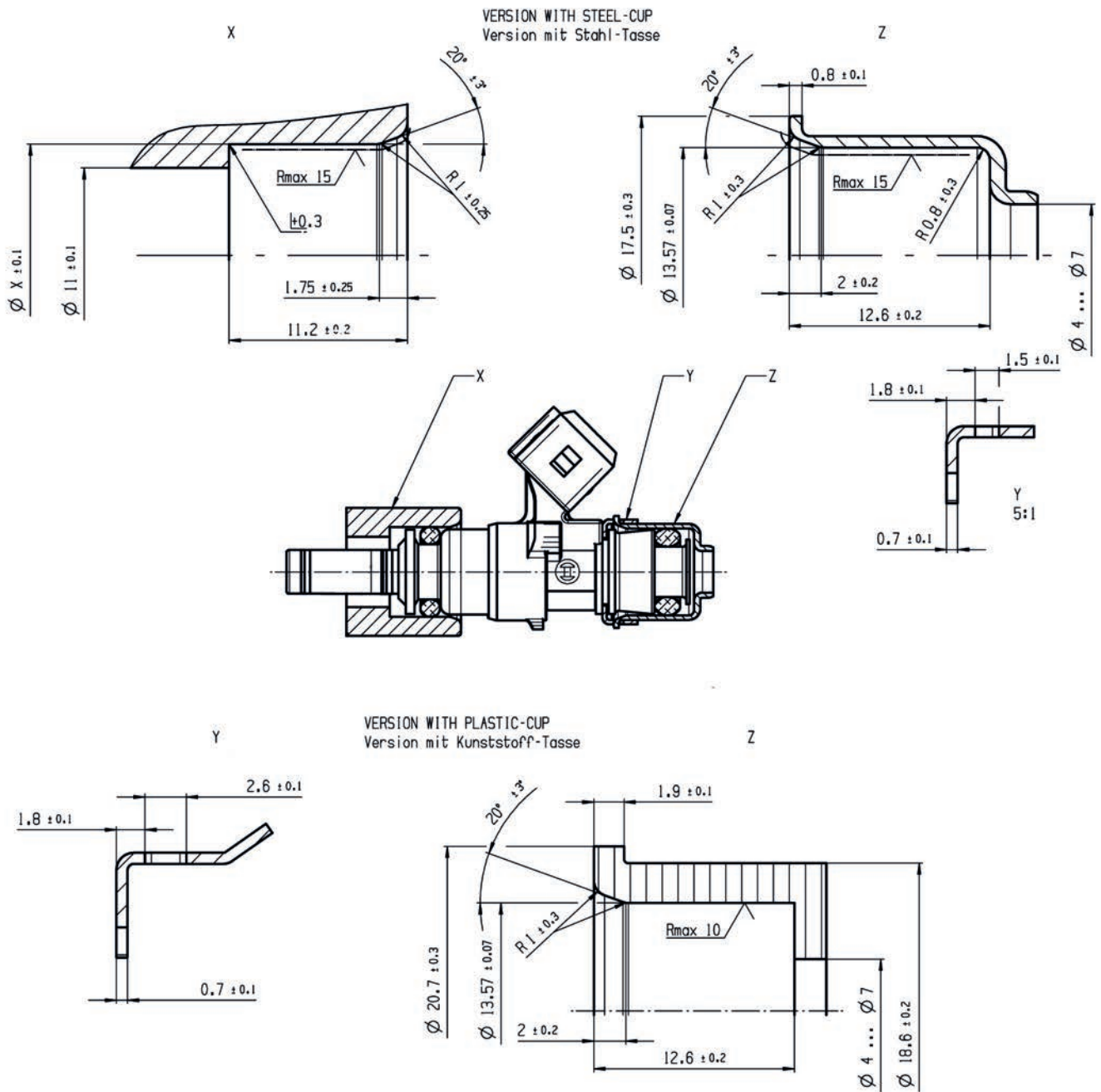
EV 14 Compact



EV 14 Standard



EV 14 Long



Mounting Instructions

Variations of Motorsport Valves

| Part No. | B280.436.038-07 | B280.436.038-08 | B280.436.038-09 | B280.436.038-10 | B280.436.487-01 |
|---------------|---------------------------|---------------------------|---------------------------|---------------------------|---------------------------|
| Flow rate/min | 503 g/736 cm ³ | 503 g/736 cm ³ | 387 g/566 cm ³ | 387 g/566 cm ³ | 670 g/980 cm ³ |
| Type | C | C | C | C | C |
| Housing | S | S | S | S | S |
| α | 70° | 25° | 70° | 25° | 30° |
| γ | 0° | 0° | 0° | 0° | 0° |
| δ | - | - | - | - | 0° |
| Resistance | 12 Ohm | 12 Ohm | 12 Ohm | 12 Ohm | 12 Ohm |

Variations of Production Type Valves

| Part No. | 0280.158.200 | 0280.158.107 | 0280.158.013 | 0280.158.038 | 0280.158.116 |
|---------------|---------------------------|---------------------------|---------------------------|---------------------------|---------------------------|
| Flow rate/min | 116 g/170 cm ³ | 150 g/219 cm ³ | 150 g/219 cm ³ | 237 g/347 cm ³ | 237 g/347 cm ³ |
| Type | E | C | E | C | E |
| Housing | S | L | S | KxT | L |
| α | 15° | 20° | 19° | 20° | 22° |
| γ | 90° | 0° | 0° | 0° | 5° |
| δ | 0° | 0° | 90° | 0° | 90° |
| Resistance | 12 Ohm | 12 Ohm | 12 Ohm | 12 Ohm | 12 Ohm |

| Part No. | 0280.158.123 | 0280.158.040 |
|---------------|---------------------------|---------------------------|
| Flow rate/min | 429 g/627 cm ³ | 670 g/980 cm ³ |
| Type | E | C |
| Housing | SxT | KxT |
| α | 25° | 30° |
| γ | 0° | 0° |
| δ | 90° | 0° |
| Resistance | 12 Ohm | 12 Ohm |

Further variations are available on request.

Represented by:

Europe:
Bosch Engineering GmbH
Motorsport
Robert-Bosch-Allee 1
74232 Abstatt
Germany
Tel.: +49 7062 911 9101
Fax: +49 7062 911 79104
motorsport@bosch.com
www.bosch-motorsport.de

North America:
Bosch Engineering North America
Motorsport
38000 Hills Tech Drive
Farmington Hills, MI 48331-3417
United States of America
Tel.: +1 248 876 2977
Fax: +1 248 876 7373
motorsport@bosch.com
www.bosch-motorsport.com

Asia-Pacific:
Bosch Engineering Japan K.K.
Motorsport
18F Queen's Tower C, 2-3-5 Minato
Mirai Nishi-ku, Yokohama-shi
Kanagawa 220-6218
Japan
Tel.: +81 45 650 5610
Fax: +81 45 650 5611
www.bosch-motorsport.jp

Australia, New Zealand and South Africa:
Robert Bosch Pty. Ltd
Motorsport
1555 Centre Road
Clayton, Victoria, 3168
Australia
Tel.: +61 (3) 9541 3901
motor.sport@au.bosch.com